

DIRECTING AT

DISNEY

THE WALT
DISNEY
FAMILY
MUSEUM

Traveling
Exhibition



Exhibition Overview



Based on the book *Directing at Disney: The Original Directors of Walt's Animated Films* written by Pete Docter and Don Peri, *Directing at Disney* is an exhibition from The Walt Disney Family Museum centered on prominent directors in animation who worked at The Walt Disney Studios during Walt's lifetime.

The often-unseen work of the director is crucial to the animation process: They are project managers, problem solvers, inventors, and technicians. The evolution of the role is intimately tied to the history of the animation industry. This exhibition spotlights the personalities who shaped some of Disney's most famous cartoons.

Meet Pete Docter & Don Peri

Pete Docter is the Oscar®-winning director of *Monsters, Inc.* (2001), *Up* (2009), *Inside Out* (2015), and *Soul* (2020), and Chief Creative Officer at Pixar Animation Studios. Most recently, he served as the Executive Producer of Pixar's *Elemental* (2023) and *Inside Out 2* (2024).



Don Peri is a Disney historian and the author of *Working with Walt* and *Working with Disney*, in addition to serving as the coauthor of *Walt Disney's First Lady of Imagineering: Harriet Burns*. He has consulted for the Walt Disney Family Foundation and lectured on Disney history at many venues including Walt Disney Animation Studios, Pixar Animation Studios, The Walt Disney Company Consumer Products Division, Disneyland (for Cast Members), and The Walt Disney Family Museum.



Those men who have worked closely with me in trying to organize and keep the studio rolling, and keep its chin above the water, should not be envied. Frankly, those fellows catch plenty of hell, and a lot of you can feel lucky that you don't have too much contact with me.

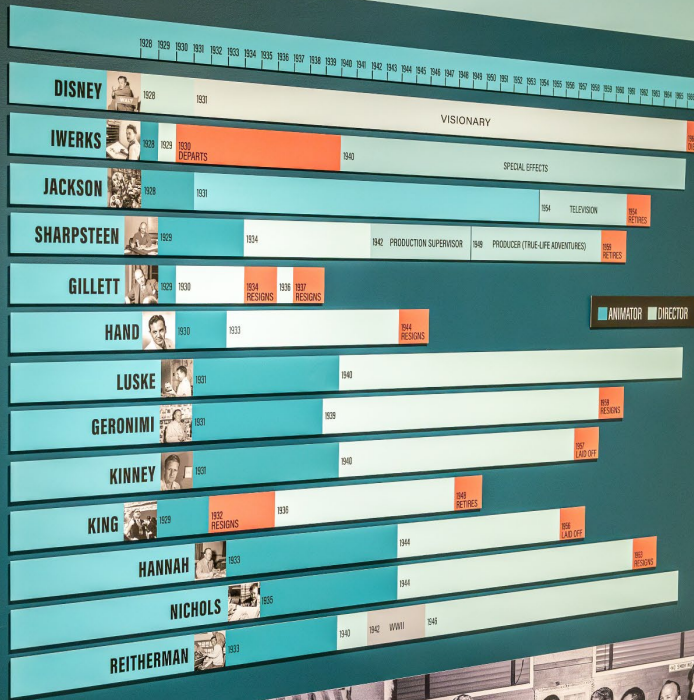
—Walt Disney

"Those men who have worked closely with me in trying to organize and keep the studio rolling, and keep its chin above the water, should not be envied. Frankly, those fellows catch plenty of hell, and a lot of you can feel lucky that you don't have too much contact with me."
—Walt Disney

Exhibition Themes

Guests will learn about:

- The lives and careers of Disney's most prominent directors
- The methods directors used to manage animators and animation
- How the role of the director evolved in tandem with technological advancements and growth of the studio



“This was so intuitive about Walt: He could put his fingers on the total theme of a picture in a story so quickly. I know it influenced me all the way through The Jungle Book (1967), to go for the personalities and not get a complicated story. And then, again this guy left so many roots in all of us; all of the pictures I did since then, I went for personality, strong characterization, strong voices that fit the character. It did make the pictures ever so much simpler to construct.”

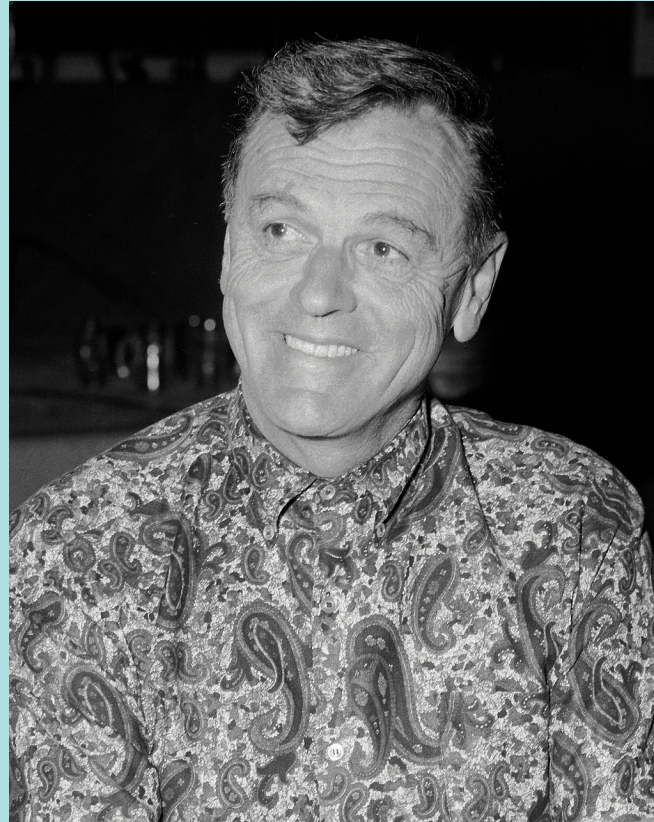
— Wolfgang “Woolie” Reitherman, Animator and Director



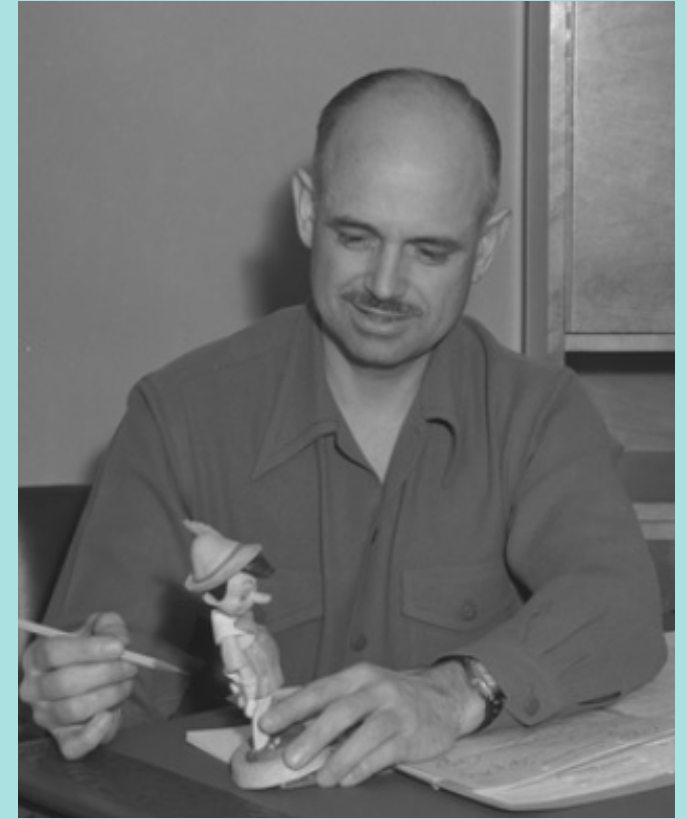
Featured Directors



Wilfred Jackson



Woolie Reitherman



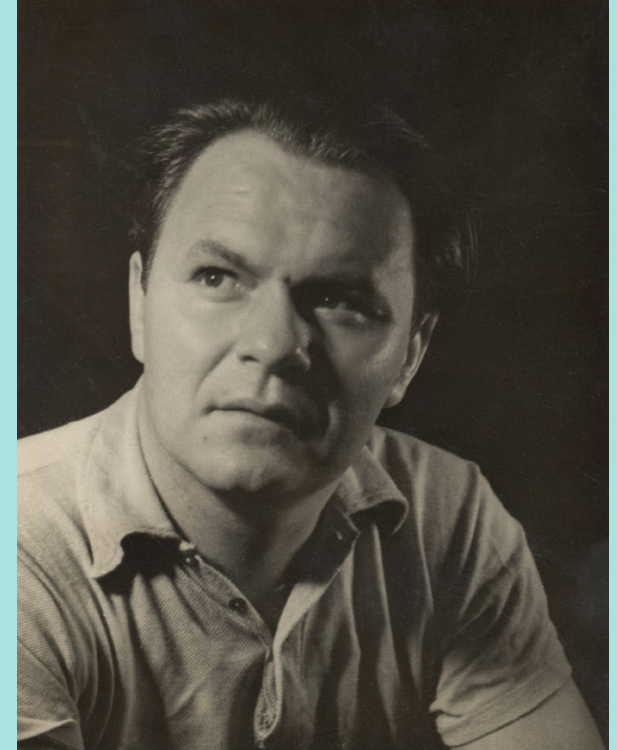
Ben Sharpsteen



Jack King



Ham Luske



Clyde Geronimi



Dave Hand



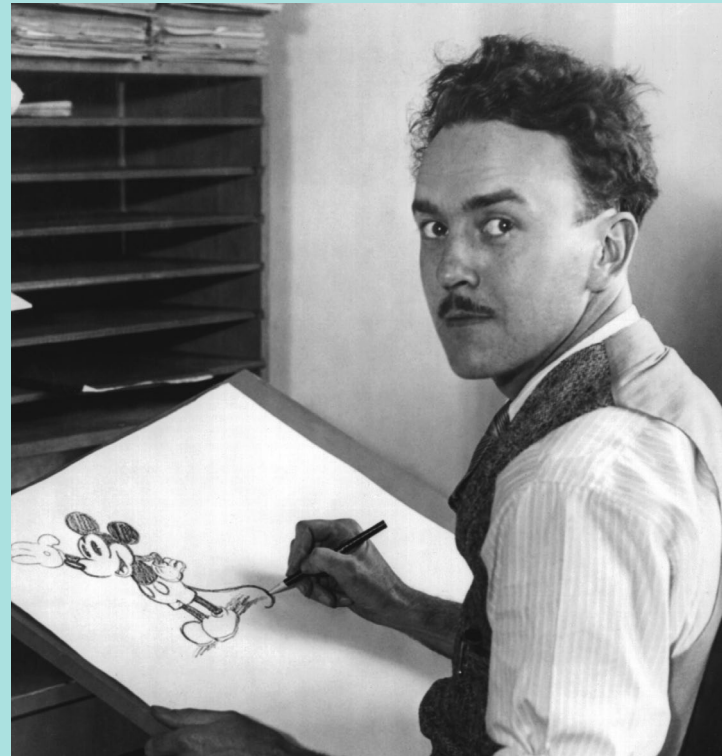
Burt Gillett



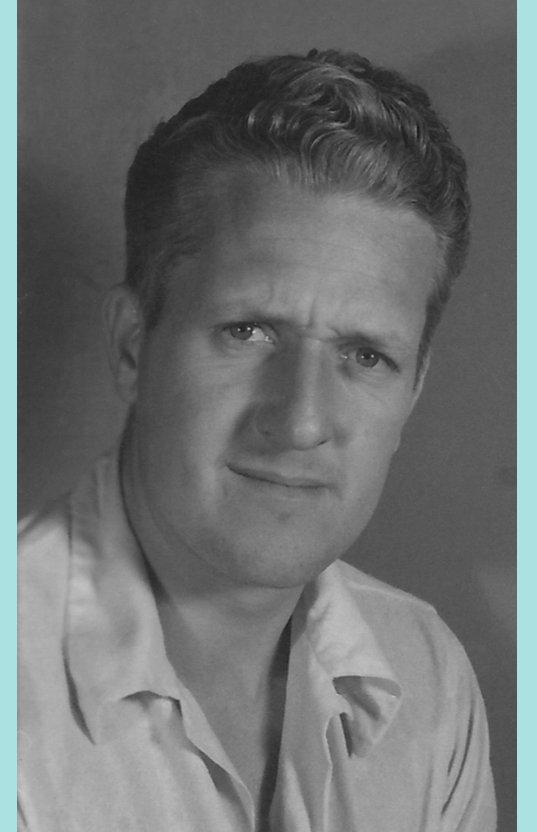
Jack Hannah



Nick Nichols



Ub Iwerks



Jack Kinney



& Walt Disney!



Burt Gillett (CENTER) directing layout artists Charlie Philippi (FOREGROUND) and Hugh Hennesy



[LEFT TO RIGHT] Johnny Cannon, Walt Disney, Burt Gillett, Ub Iwerks, Wilfred Jackson, Les Clark, (seated) Jack King, and Ben Sharpsteen gathered around Carl Stalling at the piano and singing "Minnie's Yoo Hoo"



Interactive 1:

YOU ARE THE DIRECTOR

Experience firsthand how an animation director uses timing and sound together to shape a scene. Press the button to determine how long each storyboard frame should appear on screen. Afterwards, review how the scene feels with your timing.

An interactive quiz station featuring a wooden base with a tablet screen and a red circular sign on top. The sign and the screen both display the text 'WHO'S THE DIRECTOR?'. The screen also shows a list of names and a 'START' button.

WHO'S THE
DIRECTOR?

Interactive 2: WHO'S THE DIRECTOR?

In this interactive quiz, test your knowledge of film and animation history by matching directors with the films they made.

Asset Breakdown and Technical Details

- This exhibition consists of:
 - Approximately 200 linear feet (wall space)
 - Original objects (studio paraphernalia, documents, artwork, etc): 31 framed objects, 2 3D objects
 - Graphics (photos, reproductions, etc): 46 physical prints, 59 digital files, and 25 text panels (digital or physical)
 - 2 monitors with furniture, which includes interactive activities
 - 10 digital AV files, which include: animated short/feature film clips, a Hyperion Studio Tour, and an exclusive panel discussion from the D23 2024: The Ultimate Disney Fan Event conducted by exhibition co-curators Pete Docter and Don Peri
 - Approximately 8 crates of material





For more information, please contact:

MARINA VILLAR DELGADO

Director of Exhibitions and Collections

mvillar@wdfmuseum.org

To view the virtual tour, please visit:

[WDFM Virtual Tour](#)



THE WALT
DISNEY
FAMILY
MUSEUM

